

## SAFETY IMPROVEMENTS ON NEW JERSEY AVENUE NW

DC CONTRACT NO. DCKA-2018-C-0017

FAP No.: CM-2017(042)

# CONSTRUCTION MANAGER'S WEEKLY PROGRESS REPORT 31

**12/08/2019 – 12/14/2019**

Project Website: [www.newjerseyaverehab.com](http://www.newjerseyaverehab.com)



12/11/2019- Brown color Flexi pave installed at East side of NJ Ave. NW between K & I St. NW. (North View)

## 1. EXECUTIVE SUMMARY

### **Project Description:**

Work under this contract consists of safety/streetscape improvements along New Jersey Avenue, NW from N Street NW to H Street NW and the reconstruction New York Avenue, NW from First Street NW to 4th Street NW. The work includes but is not limited to the following items: Installation of new curb, gutter, and sidewalk; Installation of full depth pavement, Pavement resurfacing; Installation of utilities; Installation of flexible pavement; Installation of street light poles; Installation of traffic signals; Installation of signing and pavement markings; Installation of electrical duct bank; Relocation of over-height detection system; Installation of wireless vehicle detection system; Installation of landscape improvements; Installation of erosion and sediment control; Implementation of transportation management plan; Mobilization and demobilization, provision and maintenance of work and storage areas, Engineer's field facilities and performance of employee training; Removal and disposal of any material as a result of the activities listed above, unless stated otherwise in the contract drawings

This project is 83.15% Federally Funded and 16.85% District-Funded. DDOT selected Capitol Paving of DC, Inc. (CPDC) as the contractor and awarded the \$12,055,691.00 contract on January 9, 2019. DDOT issued notice to proceed with contract work to CPDC with work to begin on 05/13/2019 and a substantial completion date of 11/23/2020.

## 2. STATUS OF CONSTRUCTION / PROGRESS SUMMARY

The following were some of the work items performed during this reporting week period.

- Constructed PCC Base at west side of NJ Ave. NW between L & Pierce St. NW.
- Performed excavation between Catch Basin B1 and manhole B2 at NJ Ave. across Morgan St. approximately at Station 102+00.
- Furnish and set 175.5 LF of Granite straight curb at West side of NJ Ave. NW between Sta. 110+75 and 109+18.
- Constructed one (1) Wheelchair Ramp at West side of NJ Ave. across Pierce St. NW.
- Performed 16.63 CY of Hard surface pavement excavation at Sta. 110+75 and 109+18
- Furnish and set 133 LF of Granite straight curb at West side of NJ Ave. NW between K & I St. NW.
- Performed 14.04 CY of Hard surface pavement excavation at West side of NJ Ave. NW between K & I St. NW.
- Installed 24.5 LF of 12" RCP between Catch Basin (B-1) to MH -B2.
- Constructed 12.91 CY PCC Base at NJ Ave. NW between MH-2 & MH-3.
- Used safety steel plates to cover the trench excavated at the refereed locations mentioned above.
- Constructed 70 LF of 1' wide brick gutter at West side of NJ Ave. NW between Sta. 112+00 & 112+70.



### 3. PHOTOS OF WORK PERFORMED THIS PERIOD

*Picture No. 1*



12/11/2019- Installation of granite curb at West side of NJ Ave. NW. between L & Pierce St. (South view)

*Picture No. 2*



12/11/2019- Placement of dry concrete along curb line between Pierce & NY Ave. NW. (SW view)

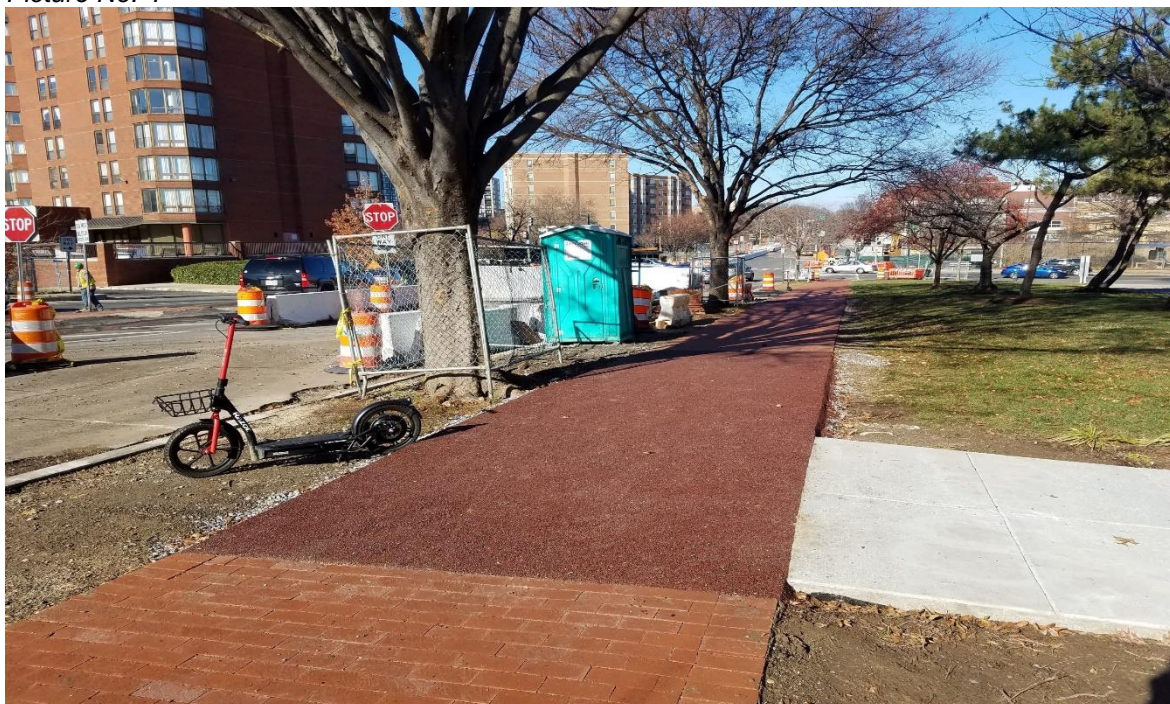


Picture No. 3



12/11/2019- Trench excavation for electrical conduits installation at NY & NJ Intersection. (West view)

Picture No. 4



12/11/2019- Flexi pave Installed at East side of NJ Ave. NW between K & I St. NW (South view)



Picture No. 5



12/12/2019- Conduits Encasement at New Jersey Ave. NW near Morgan St. NW. (North view)

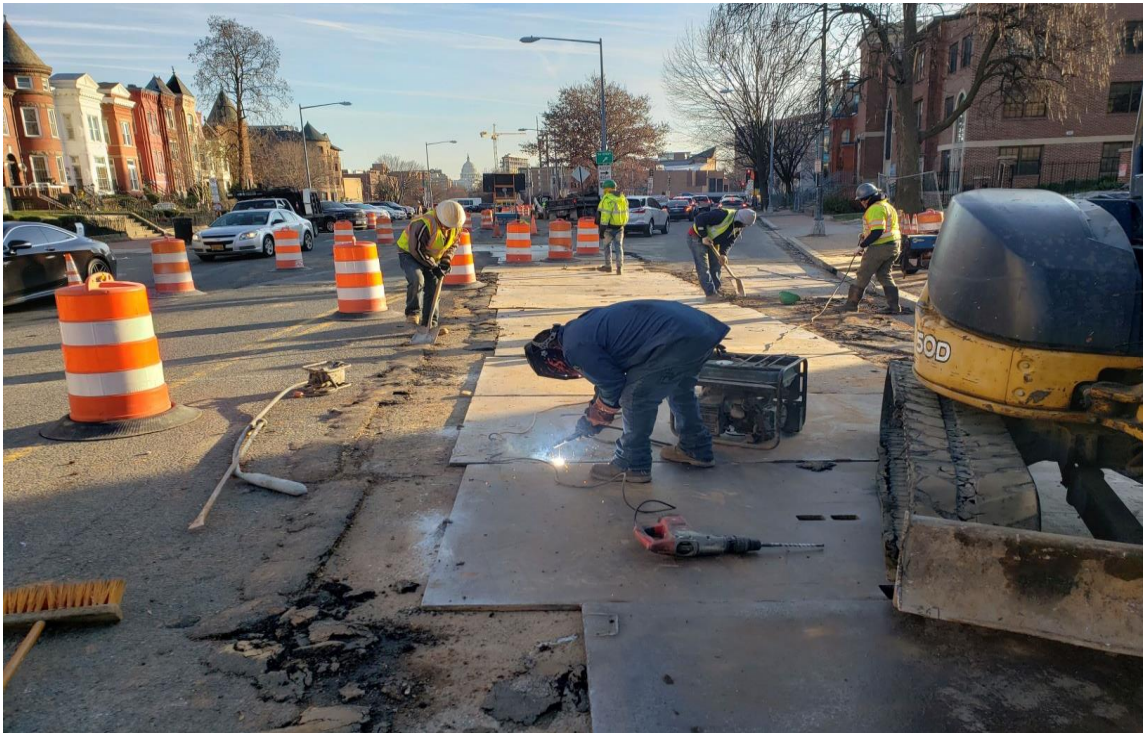
Picture No. 6



12/12/2019 –Wheelchair Ramp constructed at West side of NJ Ave. NW near Pierce St.



Picture No. 7



12/12/2019- Securing Steel protection plate at NJ Ave. NW between Morgan & N St. NW. (South view)  
Picture No. 8



12/12/2019- Granite curb installed at West side of NJ Ave. NW between L & Pierce St. NW. (North view)



Picture No. 9



12/13/2019- Compaction to GAB placed on roadway at NJ Ave. NW & Morgan St. NW. (East view)  
Picture No. 10



12/13/2019- PCC base construction at NJ Ave. NW between Morgan & N St. NW. (North view)