

SAFETY IMPROVEMENTS ON NEW JERSEY AVENUE NW  
DC CONTRACT NO. DCKA-2018-C-0017  
FAP No.: CM-2017(042)

---

CONSTRUCTION MANAGER'S  
WEEKLY PROGRESS REPORT 66

08/09/2020 – 08/15/2020

---

Project Website: [www.newjerseyaverehab.com](http://www.newjerseyaverehab.com)



08/15/2020 – Installation of traffic signs at the intersection of M St. and NJ Ave (West View)

## 1. EXECUTIVE SUMMARY

### Project Description:

Work under this contract consists of safety/streetscape improvements along New Jersey Avenue, NW from N Street NW to H Street NW and the reconstruction New York Avenue, NW from First Street NW to 4th Street NW. The work includes but is not limited to the following items: Installation of new curb, gutter, and sidewalk; Installation of full depth pavement, Pavement resurfacing; Installation of utilities; Installation of flexible pavement; Installation of street light poles; Installation of traffic signals; Installation of signing and pavement markings; Installation of electrical duct bank; Relocation of over-height detection system; Installation of wireless vehicle detection system; Installation of landscape improvements; Installation of erosion and sediment control; Implementation of transportation management plan; Mobilization and demobilization, provision and maintenance of work and storage areas, Engineer's field facilities and performance of employee training; Removal and disposal of any material as a result of the activities listed above, unless stated otherwise in the contract drawings.

This project is 83.15% Federally Funded and 16.85% District-Funded. DDOT selected Capitol Paving of DC, Inc. (CPDC) as the contractor and awarded the \$12,055,691.00 contract on January 9, 2019. DDOT issued notice to proceed with contract work to CPDC with work to begin on 05/13/2019 and a substantial completion date of 11/23/2020.

## 2. STATUS OF CONSTRUCTION / PROGRESS SUMMARY

Work this week was performed during the day on Sunday, August 9<sup>th</sup>, 2020 thru Saturday, August 15<sup>th</sup>, 2020. Please see the details below.

- Along NY Ave and 1<sup>st</sup> St.
  - 56.17 SY of Block Sidewalk on PCC Base was placed.
  - 12.54 CY Hard Surface Pavement Excavation was performed.
  - 1 Pepco manhole frame was adjusted.
- Along NY Ave and 1<sup>st</sup> St.
  - 7.75 Tons of Temporary AC, HMA Surface Course, 12.5 mm was placed.
- Median of I-395 at 4<sup>th</sup> St. and NY Ave intersection.
  - 42.56 SY of Block Sidewalk on PCC Base was placed.
  - 9.51 CY Hard Surface Pavement Excavation was performed.
  - 1 Sewer-Water-Utility Manhole Frame was adjusted.
- At NY Ave and NJ Ave intersection (SE Corner)
  - 25 LF of 8"x12" Granite Straight Curb was furnished and set.
  - 3.17 CY Hard Surface Pavement Excavation was performed.
  - Furnished and set, 5 LF of 8"x12" Granite Circular Curb Radius Under 10Ft.
  - 2, PCC Wheelchair/Bicycle Ramp - Existing Construction were installed.
  - 1 Sewer-Water-Utility Manhole Frame was adjusted.
- Along NY Ave and 4<sup>th</sup> St.
  - 42.0 SY of Block Sidewalk on PCC Base was placed.
  - 7.71 CY Hard Surface Pavement Excavation was performed.
- At NY Ave and NJ Ave intersection (SE Corner)
  - 49.250 LF of 8"x12" Granite Straight Curb was furnished and Set.
  - 8.33 LF of 8"x12" Granite Circular Curb Radius Under 10Ft was furnished and Set.
  - 16.0 LF of 8"x12" Granite Circular Curb Radius 10-100Ft was furnished and Set.
  - 2, PCC Wheelchair/Bicycle Ramp - Existing Construction were placed and 7.77 CY of Hard Surface Pavement Excavation was performed.
- Along NY Ave and 1<sup>st</sup> St. / North Capitol St.
  - Furnished & Installed, 1,106.000 LF of 50 Pair 19 AWG Underground Communications Cable
- Along NY Ave and 4<sup>th</sup> St. (SW Corner)
  - Furnished & Installed, 2 Galvanized Steel Transformer Base

- 
- Along NY Ave and NJ Ave intersection (SE Corner)
    - 94 SF of Brick Gutter was installed at this location.
    - 32.110 SY of Block Sidewalk on PCC Base was placed.
    - 3.530 CY Hard Surface Pavement Excavation and Common Excavation was performed.
    - 2.260 CY of PCC Base was placed and 1.36 CY of Aggregate Base Course was placed
  - Along NY Ave between 1<sup>st</sup> St. and 4<sup>th</sup> St.
    - 4.170 Tons of Temporary AC, HMA Surface Course, 12.5 mm was placed.
    - 1204 LF of 4 Inch Lane Marking were placed.
    - 57 LF of 6 Inch Lane Marking were placed.
  - NY Ave and 4<sup>th</sup> St. intersection
    - 185 LF of 6-inch, Thermoplastic Pavement Marking was placed.
    - 40 LF of 12-inch, Thermoplastic Pavement Marking was placed.
    - 215 LF of 24-inch, Thermoplastic Pavement Marking was placed.
  - Along NY Ave and NJ Ave intersection (SE Corner)
    - Furnished and installed, 2 PCC Foundation for Traffic Sig /Pendant Post St Lt Poles
  - Along NY Ave and NJ Ave intersection
    - Furnished and installed, 43 LF of One 2 In & Two 4 In PVC Encased Elec Conduits
  - NY Ave and 1<sup>st</sup> St. intersection
    - Furnished and installed, 1 – 2 Section Conventional Pedestrian Signal Head on Pole (12").
    - Furnished and installed, 1 –12 Inch Overlay White Walking Person & Portland Orange Led Mod.
    - Furnished and installed, 1 –12 Inch Portland Orange Countdown Led Module.
  - NY Ave and M St. intersection
    - Furnished and installed, 1 – 270W LED.
  - NY Ave across Kirby St.
    - 11.250 SF Traffic Sign Panels were installed.
    - 2, Yellow Ball Led Module (12 inch) were installed.
    - Furnished and installed, 1 – 3 Section Conv Traffic Sig Head on Mast Arm (Lenses 12").
  - Along NY Ave and NJ Ave intersection (SE Corner)
    - 43.830 SY of Brick Sidewalk on Sand/Cement Bed was placed.
    - 9.790 CY of Hard Surface Pavement Excavation was performed.
    - 4.82 CY of Aggregate Base Course was placed.
    - 5.23 Tons of Temporary AC, HMA Surface Course, 12.5 mm was placed.
    - 54 LF of 24 Inch Thermoplastic Pavement Marking was placed.
    - 17.5 LF of 4 Inch Thermoplastic Pavement Marking was placed.
  - NJ Ave between M St. and N St.
    - 5.330 SF of Traffic Sign Panels were placed.
    - 24.000 LF of Metal Sign Posts, 3.00 Pounds per Foot were placed.
    - 17.000 SF of Existing Ground Mounted Sign was removed.



### 3. PHOTOS OF WORK PERFORMED THIS PERIOD



*Picture No. 1: 08/10/2020 – Manhole frame being adjusted in the sidewalk at the intersection of NY Ave and 4<sup>th</sup> St. (North View)*



*Picture No. 2: 08/10/2020 – Installation of block paver in progress between along NY Ave near 1<sup>st</sup> St. (South View)*





*Picture No. 3 - 08/10/2020 – Installation of PCC base for the sidewalk at the intersection of NY Ave and 4<sup>th</sup> St. (South View)*

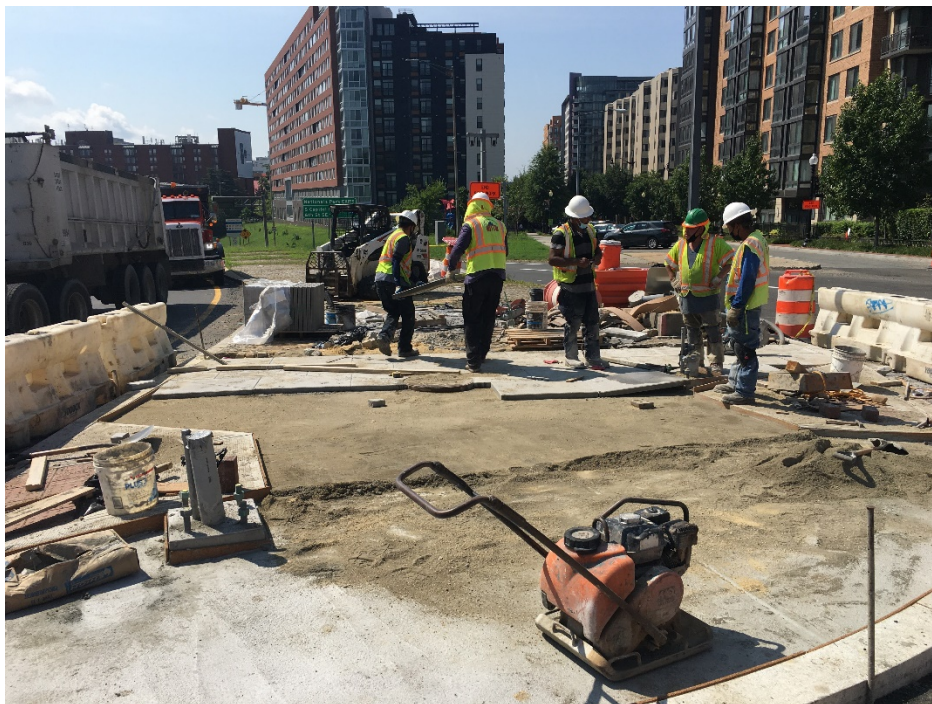


*Picture No. 4 – 08/11/2020 – Installation of double catch basin at the installation of NY Ave and NJ Ave SE corner (South View)*





*Picture No. 5 – 08/11/2020 – Excavation of existing sidewalk at the intersection of NY Ave and NJ Ave. (East View)*



*Picture No. 6 – 08/11/2020 – Block paver sidewalk being installed at the intersection of NY Ave and 4<sup>th</sup> St. (South View)*





*Picture No. 7 – 08/12/2020 – Sidewalk being installed at the intersection of NY Ave and 4<sup>th</sup> St. (South View)*



*Picture No. 8 – 08/12/2020 – Brick gutter being installed at the intersection of NY Ave and 1<sup>st</sup> St. (East View)*





Picture No. 9 – 08/14/2020 – Brick gutter being installed at the intersection of NY Ave and NJ Ave (West View)



Picture No. 10 – 08/14/2020 – Temporary pavement markings in progress along NY Ave between 1<sup>st</sup> St. and M St. (East View)





*Picture No. 11 – 08/15/2020 – Temporary pavement markings in progress along NY Ave between NJ Ave and M St. (East View)*



*Picture No. 12 – 08/15/2020 – Installation of brick sidewalk at the intersection of NY Ave and NJ Ave (South View)*